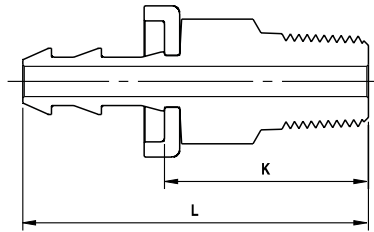


# HAM-LET HOSE CONNECTORS

## HOSE-END™

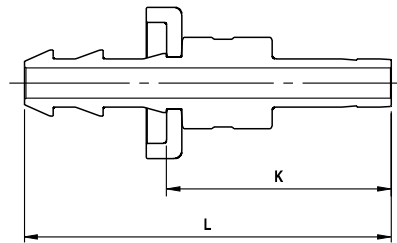


## 130 HMPO MALE PIPE THREADS



Ordering Information	Hose I.D.	T Male NPT Size	K		L	
			inch	mm	inch	mm
130HMPO _ 1/4 X 1/4	1/4	1/4	0.95	24.00	1.68	42.70
130HMPO _ 3/8 X 1/4	3/8	1/4	0.95	24.00	1.80	45.70
130HMPO _ 3/8 X 3/8	3/8	3/8	0.95	24.00	1.80	45.70
130HMPO _ 1/2 X 1/2	1/2	1/2	1.17	29.70	2.19	55.60
130HMPO _ 3/4 X 3/4	3/4	3/4	1.17	29.70	2.81	71.40

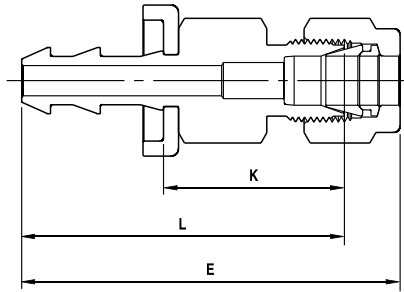
## 131 PO TUBE ADAPTERS



INCH						
Ordering Information	Hose I.D.	B Tube Size	L		K	
			inch	mm	inch	mm
131PO _ 1/4 X 1/4	1/4	1/4	1.91	48.50	1.17	29.70
131PO _ 3/8 X 3/8	3/8	3/8	2.02	51.30	1.17	29.70
131PO _ 1/2 X 1/2	1/2	1/2	2.47	62.70	1.45	36.80
131PO _ 3/4 X 3/4	3/4	3/4	3.14	79.80	1.50	38.05

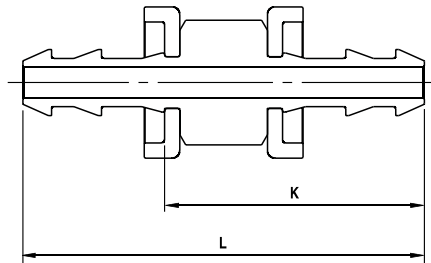
METRIC						
Ordering Information	Hose I.D.	B Tube Size	L		K	
			mm		mm	
131PO _ 1/4 X 6mm	1/4	6mm	48.50		29.70	
131PO _ 3/8 X 10mm	3/8	10mm	51.60		30.10	

**130 LHPO  
LET-LOK® TUBE FITTINGS**



Ordering Information	A Tube O.D.	Hose I.D.	E		K		L	
			inch	mm	inch	mm	inch	mm
130LHPO _ 1/4 X 1/4	1/4	1/4	1.97	50.00	0.95	24.00	1.68	42.65
130LHPO _ 3/8 X 3/8	3/8	3/8	2.11	53.60	0.97	24.60	1.82	46.25
130LHPO _ 1/2 X 1/2	1/2	1/2	2.47	62.70	1.05	26.70	2.07	52.55

**132 PO  
UNIONS**



Ordering Information	Hose I.D.	Hose I.D.	L		K	
			inch	mm	inch	mm
132PO _ 1/4 X 1/4	1/4	1/4	2.07	52.60	1.33	33.90
132PO _ 3/8 X 3/8	3/8	3/8	2.25	57.20	1.40	35.50
132PO _ 1/2 X 1/2	1/2	1/2	2.61	66.30	1.59	40.40
132PO _ 3/4 X 3/4	3/4	3/4	3.83	97.30	2.18	55.60

**ASSEMBLY INSTRUCTIONS**

- Cut a square edge with a hose cutter.
- Push **HOSE-END™** into end connection.
- Continue pushing until **HOSE-END™** reaches plastic cap.

Diagram illustrating the assembly process: 1. A hose with a square edge cut. 2. The HOSE-END connector being pushed into the hose. 3. The HOSE-END connector fully inserted, reaching the plastic cap.

**DISASSEMBLY INSTRUCTIONS**

- Slit **HOSE-END™** as described.
- Bend and pull hose out from **HOSE-END™** connector.

Diagram illustrating the disassembly process: 1. A utility knife slitting the HOSE-END connector. 2. The hose being bent and pulled out from the connector.

